

# TODAY'S BROADCASTS FROM CHICAGO STATIONS

## ON SHORT WAVES.

MELBOURNE, AUSTRALIA—5 a. m.—Saturday Guest Night. VEGNE, 31.5 m. (9.510 kc.).

GENEVA—4:30 p. m.—League of Nations—Summary of week's War Discussions. HBL, 31.2 m. (9.650 kc.).

LONDON—6:15 p. m.—The Lord Mayor's Banquet. GSC, 31.3 m. (9.580 kc.), or GSI, 31.5 m. (9.610 kc.), or GSL, 49.1 m. (8.110 kc.).

LONDON—9 p. m.—"Horse and Hound and Hunting Spear." GSC, 31.3 m. (9.580 kc.), or GSI, 49.1 m. (8.110 kc.).

## CHICAGO WAVE LENGTHS.

W-G-N—720 WLS—870 WIND—500  
 WBBM—770 WAAF—920 WJJD—1130  
 WMAQ—670 WCFE—970 WGES—1360  
 WENR—870 WMBM—1080 WHFC—1420

## A. M.

7:00—W-G-N—"Good Morning," musical program; time signals; temperature readings.  
 WBBM—Musical Clock.  
 WMAQ—Suburban Hour.  
 WLS—Julian Bentley.  
 WAAF—The Eye Opener.  
 WIND—Musical Clock.

7:15—WLS—Red Foley.

7:30—WAAF—Breakfast Express.  
 WLS—Junior Broadcasters.

7:45—WLS—Joe.  
 WJJD—Happy-Go-Lucky Time.  
 WIND—University of Chicago.

8:00—WMAQ—Musical Chimes.  
 WLS—Lulu Belle and Scotty.

8:15—W-G-N—Modern Melodies.  
 WCFE—Morning musical.

8:30—WIND—Pauline Jacques.  
 WLS—Ford Rush.

8:40—W-G-N—Len Salvo's Mail Box.

8:45—WIND—Cecil and Sally.

9:00—W-G-N—Hymns of All Churches.  
 WMAQ—Art Tatum.  
 WBBM—Lazy Moments.  
 WJJD—High school program.  
 WLS—Prairie Ramblers.

9:15—W-G-N—Margery Graham.  
 WAAF—Sallyou.  
 WBBM—Food Flashes.  
 WJJD—Dixie Memories.

9:30—W-G-N—Serenade.  
 WLS—Roundup.  
 WAAF—Jim and Jen.  
 WBBM—Butterbuns.  
 WJJD—Modern Woman.  
 WMAQ—Music and comments.

9:45—WJJD—Parent Teachers.  
 WMAQ—Originalities.  
 WBBM—Boy Scouts.  
 WAAF—Hawaiian Echoes.  
 WIND—Band parade.  
 WLS—Rocky, basso.

10:00—W-G-N—House Party: Betty, Jean and Jim.  
 WLS—Martha Crane and Helen Joyce.  
 WMAQ—Our American schools.  
 WCFE—Ruth Wakefield.  
 WBBM—Cincinnati conservatory.

10:15—W-G-N—June Baker, Home Management.  
 WMAQ—Norsemen.  
 WIND—The Band Box.  
 WLS—Hilltoppers.  
 WAAF—Estelle Barnes, pianist.

10:30—W-G-N—Morning Melody.  
 WCFE—Marimba orchestra.  
 WJJD—Studio program.  
 WMAQ—Whitney ensemble.  
 WIND—Mark Love, basso.  
 WJJD—Master's Music.  
 WIND—Aristocrats.  
 WLS—Jolly Joe.  
 WCFE—Fashion Serenade.

11:00—W-G-N—Familiar Tunes.  
 WBBM—Neumiller and Charles.  
 WIND—Organ melodies.  
 WMAQ—Minute Men Quartet.  
 W-G-N—Len Salvo, organist.  
 WLS—Old Kitchen Kettle.  
 WAAF—Hits of the Week.  
 WBBM—Sentimental Schma.  
 WIND—Red Hot.  
 WMAQ—Honeyboy and Sassaft.  
 W-G-N—Harold Turner, pianist.  
 WMAQ—Five Hours Back.  
 WLS—Ralph Emerson.  
 WCFE—Farm and Home Hour.  
 WBBM—Cotton Eye Joe.

11:15—W-G-N—Painted Dreams [MBS].  
 WIND—Little Red Schoolhouse.  
 WAAF—Jim Hamilton.  
 WJJD—The Inquirer.  
 WBBM—Accent on Youth.

Noon—W-G-N—Len Salvo, organist.  
 WBBM—Radio girl.  
 WMAQ—Leo Gordon's orchestra.  
 WIND—Dance music.  
 WAAF—Symphonic hour.  
 WJJD—Rhubarb Red.  
 WLS—Varieties, Ralph Emerson.

P. M.

12:15—W-G-N—Dorling Sisters.  
 WLS—Garden club.  
 WBBM—Grand Finale.  
 WCFE—Midday Melodies.

12:30—W-G-N—Markets; Mid-day service; the Rev. W. A. Setzer, Redeemer Evangelical Lutheran church.  
 WCFE—Noon Time Melodies.  
 WJJD—Uncle Joe Dobson.  
 WBBM—"Man on the Street."  
 WMAQ—George Duffy's orchestra.

12:45—WBBM—Camp Fire Girls.  
 WCFE—Football: Harvard vs. Princeton.

1:00—W-G-N—Palmer House ensemble [MBS].  
 WBBM—Art Kahn, pianist.  
 WAAF—Hooster Philosopher.  
 WIND—Italian songs.  
 WLS—Future Farmers.  
 WJJD—Mooseheart children.  
 WMAQ—Words and Music.

1:15—W-G-N—Waves of Melody.  
 WBBM—Broadcast Rhymesters.  
 WLS—Homo talent.

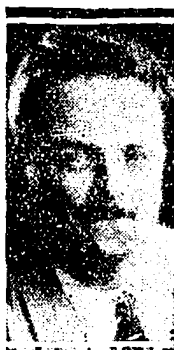
1:30—W-G-N—Harold Turner, pianist.  
 WMAQ—Football preview.  
 WJJD—Tea Tunes.  
 WAAF—Encore.  
 WLS—Homemakers.

1:45—W-G-N—Football: Northwestern vs. Notre Dame. Also WBBM and WMAQ.  
 WJJD—Happy Harmonies.  
 WIND—Football: Chicago vs. Ohio State.

## Today's Features

### ON W-G-N.

Football again headlines W-G-N's broadcast today with Quin Ryan presenting a play by play description of the Notre Dame-Northwestern game from the Memorial stadium at South Bend over THE TRIBUNE's station and the Mutual network. The broadcast will start at 1:45 p. m., 15 minutes before game time. WBBM and WMAQ will also carry the broadcast.



QUIN RYAN.

Dance music will head W-G-N's evening programs beginning at 8:15 o'clock and featuring the orchestras of Orville Knapp, Jan Garber, Veloz and Yolanda, Horace Heidt, Joe Sanders, and Albert Kavellu. An interlude at 9:30 o'clock will feature the Dorling Sisters, harmony trio.

### Other features:

7 a. m.—W-G-N's Good Morning program, time signals, temperature reading, and music.

9 a. m.—"Hymns of All Churches."  
 10 a. m.—"The House Party," with Virginia Clark and Betty, Jean, and Jim.

1:15 p. m.—"Waves of Melody," a program of popular rhythm.  
 6 p. m. and 8:07 p. m.—Bob Elson with football highlights of the day.

6:45 p. m.—"The Washington Mercury-round."  
 7 p. m.—"Those O'Malleys."

### ON OTHER STATIONS.

6:30 p. m.—WBBM—Edward D'Anna's band.  
 7 p. m.—WMAQ—Your Hit Parade—Al Goodman's orchestra, Loretta Lee, Willie Morris, Stuart Allen, and Rhythm Kings. [New talent.]

7:15 p. m.—WCFE—Boston Symphony orchestra.  
 8 p. m.—WMAQ—Rubinoff, Virginia Rea, and Jan Peerce.  
 8:30 p. m.—WBBM—Lily Pons and Andre Kostelanetz's orchestra.

8:30 p. m.—WMAQ—Wallace Beery's revue—Harriet Hilliard, Chester Morris, Helen Broderick, Lester Crawford, and Victor Young's music.  
 8:30 p. m.—WLS—National Barn dance.

9 p. m.—WBBM—Red Cross roll call—Mrs. Franklin Roosevelt, Kate Smith, and Admiral Cary T. Grayson.  
 9:30 p. m.—WMAQ—Carefree carnival.

2:00—WJJD—Sports Parade.  
 WLS—Merry-Go-Round.  
 2:15—WJJD—Variety Time.  
 2:30—WAAF—Waltz Time.

3:00—WJJD—Bobbie Dickson, songs.  
 WENR—Music and Comments.  
 WAAF—Music in the Air.  
 3:15—WJJD—Hot and Fast.

3:30—WENR—Melody Mixers.  
 WENR—On Wings of Song.  
 WENR—Fascinating Rhythm.  
 3:45—WENR—Blue Room Echoes.  
 WAAF—Jimmy Kozak.

4:00—WJJD—Pickard Family.  
 WENR—Musical Adventures.  
 WAAF—Sport Shots.  
 4:15—WBBM—Billie Bailey.  
 WIND—Tea Dansante.  
 WENR—Jackie Heller.

4:30—W-G-N—Len Salvo, organist.  
 WMAQ—Kaltenmeyer's Kindergarten.  
 WENR—String ensemble.  
 WCFE—Studio Show.  
 WBBM—Billie Bailey.

4:45—W-G-N—Archiehall Melodies.  
 WENR—Week-end News Review.  
 WBBM—"Last Minute Men."

5:00—WENR—Ray Knight's Cuckoos.  
 WMAQ—Music and Comment.  
 WIND—Song of Eventide.  
 WJJD—Polish program.  
 WCFE—Sunset Serenade.  
 WBBM—Frederic W. Wile.

5:15—W-G-N—Junior Police Patrol.  
 WIND—Velvet Tuff.  
 WBBM—Song of the Strings.  
 WMAQ—Pitler's orchestra.

5:30—W-G-N—Evening Interlude.  
 WIND—Uncle Bob.  
 WBBM—Melodic Moments.  
 WMAQ—Morin Sisters.

5:45—W-G-N—Harold Turner, pianist.  
 WIND—American Family Robinson.  
 WENR—Jamboree.  
 WBBM—Jack Major.  
 WMAQ—Region in the News.

6:00—W-G-N—Bob Elson's Football Winners.  
 WMAQ—Sport Page of the Air.  
 WBBM—Other People's Money.  
 WCFE—Ten Pin Tattler.

6:15—W-G-N—Palmer House ensemble.  
 WMAQ—"Poppey."  
 WBBM—Football résumé.  
 WCFE—Si Perkins.

6:30—W-G-N—Judy and Her Jesters.  
 WMAQ—Hampton Institute singers.  
 WBBM—Edward D'Anna's band.  
 WCFE—Johnny O'Brien.

6:45—W-G-N—"Washington Merry-Go-Round" [MBS].  
 WCFE—Maurine Mac.  
 WBBM—Pat Finnegan.

7:00—W-G-N—"Those O'Malleys."  
 WMAQ—Your Hit Parade.  
 WBBM—California Melodies.  
 WIND—William E. Clark.  
 WLS—Prairie Ramblers.  
 WCFE—Doc Norman.

7:15—W-G-N—Veloz and Yolanda's orchestra [MBS].  
 WBBM—Melodies of Yesterday.  
 WCFE—Boston Symphony orchestra.  
 WLS—Hot Shots.

7:30—W-G-N—Horace Heidt's orchestra.  
 WLS—The National Barn dance.  
 WBBM—Schragger's orchestra.  
 WCFE—Jamboree.

7:45—W-G-N—Palmer House ensemble.  
 WBBM—Seymour Simon's orchestra.  
 WIND—Hi Hilarities.

8:00—W-G-N—Tomorrow's Tribune.  
 WLS—Barn dance jamboree.  
 WBBM—Lily Pons.  
 WCFE—Herr Louie.

8:15—W-G-N—Orville Knapp's orchestra.  
 WIND—The dance orchestra.  
 9:00—WBBM—Herbie Kay's orchestra.  
 WIND—Gingola.

9:15—W-G-N—Veloz and Yolanda's orchestra.  
 WBBM—Marty May-time.  
 WLS—Barn dance.

8:45—W-G-N—Orville Knapp's orchestra.  
 WIND—The dance orchestra.  
 9:00—WBBM—Herbie Kay's orchestra.  
 WIND—Gingola.

9:15—W-G-N—Veloz and Yolanda's orchestra.  
 WBBM—Marty May-time.  
 WLS—Barn dance.

8:45—W-G-N—Orville Knapp's orchestra.  
 WIND—The dance orchestra.  
 9:00—WBBM—Herbie Kay's orchestra.  
 WIND—Gingola.

9:15—W-G-N—Veloz and Yolanda's orchestra.  
 WBBM—Marty May-time.  
 WLS—Barn dance.

8:45—W-G-N—Orville Knapp's orchestra.  
 WIND—The dance orchestra.  
 9:00—WBBM—Herbie Kay's orchestra.  
 WIND—Gingola.

9:15—W-G-N—Veloz and Yolanda's orchestra.  
 WBBM—Marty May-time.  
 WLS—Barn dance.

8:45—W-G-N—Orville Knapp's orchestra.  
 WIND—The dance orchestra.  
 9:00—WBBM—Herbie Kay's orchestra.  
 WIND—Gingola.

9:15—W-G-N—Veloz and Yolanda's orchestra.  
 WBBM—Marty May-time.  
 WLS—Barn dance.

8:45—W-G-N—Orville Knapp's orchestra.  
 WIND—The dance orchestra.  
 9:00—WBBM—Herbie Kay's orchestra.  
 WIND—Gingola.

9:15—W-G-N—Veloz and Yolanda's orchestra.  
 WBBM—Marty May-time.  
 WLS—Barn dance.

8:45—W-G-N—Orville Knapp's orchestra.  
 WIND—The dance orchestra.  
 9:00—WBBM—Herbie Kay's orchestra.  
 WIND—Gingola.

9:15—W-G-N—Veloz and Yolanda's orchestra.  
 WBBM—Marty May-time.  
 WLS—Barn dance.

8:45—W-G-N—Orville Knapp's orchestra.  
 WIND—The dance orchestra.  
 9:00—WBBM—Herbie Kay's orchestra.  
 WIND—Gingola.

9:15—W-G-N—Veloz and Yolanda's orchestra.  
 WBBM—Marty May-time.  
 WLS—Barn dance.